



Free to the residents  
of Snitterfield

ISSUE 40  
WINTER 2015



## MERRY CHRISTMAS TO ONE AND ALL!

# Forest school branches out

**We are very proud to have a Forest School site and trained staff here at Snitterfield Primary School.**

Sarah Barnett and Andrea Duxbury (Class 1 staff) are trained in the principles of Forest School and have introduced us to the Forest School ethos, which is: 'We believe that everyone benefits from access to the natural environment and in particular the specific opportunities presented by woodland. Forest School offers a learner-led approach where participants can learn through exploration in association with others or independently. We believe

the natural environment offers learners of all abilities the chance to show imagination, skill, ability and determination in a non-classroom setting.'

All our classes have access to the learning opportunities of Forest School over the year and the benefits that it brings are numerous. Most children love being outside even when it's cold and raining!

The site was further developed over the October half-term break, thanks to some fantastic teamwork from Jaguar Land Rover led by Snitterfield parent Mark Holt. As part of JLR's Corporate Citizenship programme Mark organised a team to come and improve the existing site. The site was quite restricted and was hampering the children's learning.

The main aims of the project were to extend the site and fence it, clear out old wood and dig a fire pit. They worked so fast that extra jobs were found to be done in the school grounds and outbuildings. An amazing effort – thank you so much! The children are already benefitting from the extended space.

Thanks must go to Mark Holt for coordinating the project with Andrea and Sarah, and to his employers at JLR who donated £500 towards materials. Many thanks to fencing suppliers Richardson's of Feckenham. We are also grateful for the generous support of Snitterfield Fete Committee and Snitterfield Action for Climate Change, who have each awarded grants of £500 towards the project.

**Sarah Plaskitt**  
**Executive Headteacher**  
**Stratford Rural Schools Federation**  
*News from the school continues on page 5*

*Phoebe Cook and Maria Queralt from Year 4*



# News from your District Councillor



## Combined Authority

As part of the Government's plans to devolve power away from Westminster, local authorities are being encouraged to form a Combined Authority with the purpose of promoting economic growth on a sub-region basis by addressing issues including transport, skills and economic prosperity. Combined Authorities increasingly became the body of choice for devolution of power and funding from Government in the last Parliament and the new Government has announced that it intends to pursue economic growth through devolution.

The Council voted unanimously in support for Stratford District Council to sit as an observer to the newly formed Shadow Board of the West Midlands Combined Authority whilst continuing to explore alternative options.

Since then things have moved on rather quickly and early in October we were asked to make a full commitment to joining the WMCA, including a financial contribution towards the establishment of the combined authority and that should we choose not to we would no longer be able to sit on the Shadow Board.

At this stage no new information about the constitution of the WMCA has been presented and the full extent of responsibility and benefits to the members that choose to join has not been fully defined.

Early in October the Council called for an extraordinary meeting to debate and vote either for or against signing up to the West Midlands Combined Authority. The debate itself was, in my opinion, the best debate the council has held since I joined as a member last year. The vote was incredibly close and finally came out at 16 against, 15 for. The Council therefore resolved not to join the WMCA, although I believe that there will be an opportunity to join in the future when hopefully we will know more about how the WMCA would work.

## Core Strategy

Establishing the District Council's Core Strategy continues to be a top priority and at full Council on 19 October it was agreed that, following a number of modifications and recent public consultation, the updated Draft Core Strategy be submitted to the Planning Inspector for its second round of public examination.

Pete Drew, the appointed planning inspector, started his examination in January 2014 and published his Interim Conclusions on 18 March 2015. His conclusions included a number of modifications that required significant work by the Council. This work largely focused on housing requirements, meeting increased housing through an additional strategic site, affordable housing numbers and limited employment related issues.

The work carried out by the Council was published in July for public consultation. The representation period closed on 25 September where 182 respondents submitted 379 representations. The modifications were required in order to secure a finding from the Inspector that the plan is sound and can be adopted. We are now waiting to find out when the second round of public consultation will begin.

## Community Infrastructure Levy

As of 18 October consultation began on the Community Infrastructure Levy (CIL) and ran until 13 November. CIL is a charge on new development that will be collected through the planning process and is set to replace some of the contributions made through s.106 agreements. S.106 will continue but will be used on a more limited basis, focused on site specific requirements such as affordable housing provision. Income raised through CIL will help fund a range

of infrastructure that is required as a result of development. Examples of which are road schemes, schools and community facilities. Following public consultation the CIL Charging Schedules will be submitted to the Planning Inspector for independent examination. It is anticipated that this will happen in the first half of 2016. To make a representation either email your comments to [www.planning.policy@stratford-dc.gov.uk](mailto:www.planning.policy@stratford-dc.gov.uk) or go online to [www.stratford.gov.uk](http://www.stratford.gov.uk)

## Affordable Homes

Stratford District Council made Affordable Housing one of its corporate priorities. Although the Council no longer owns or manages any affordable housing, it does play a major role in delivering additional affordable homes in the district.

Between 1 April 2014 and 31 March 2015, a record 215 new affordable homes were built. In that time the council successfully completed its Rural Housing Programme, which ensured £1.1million of grant funding towards affordable homes.

This clearly demonstrates the Council's commitment to meeting local housing need by providing quality affordable homes to our local communities.

**Peter Richards**  
[Peter.Richards@stratford-dc.gov.uk](mailto:Peter.Richards@stratford-dc.gov.uk)  
Mobile: 07912 410375

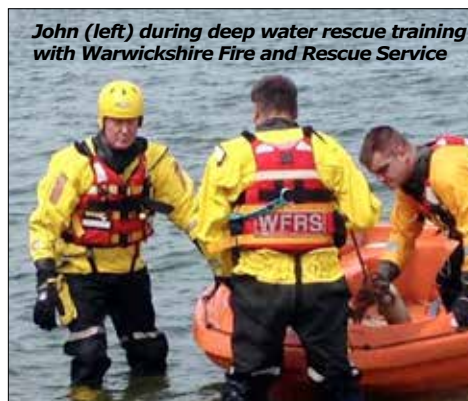
# News from your County Councillor



A breakthrough has been achieved over the flooding problem on The Green with the Environment Agency agreeing to transfer £2 million from its budget over to the County to deliver a scheme involving a relief channel in the field behind The Green. This was an unusual decision as Bell Brook is a main river and the sole responsibility of the Environment Agency. The District Council is contributing £20,000 (its entire annual flood budget) and the County is making up the rest and any overspend.

An investigation to devise safer walking routes for pupils attending Snitterfield School will start in April with a feasibility study. The very limited road space in the centre of the village

makes finding a solution very difficult, but if a solution can be developed funding will be made available.



in safeguarding of vulnerable groups within the context of delivering an eight per cent year-on-year cash saving.

The Council is pursuing integration of Warwickshire and Hereford and Worcester Fire and Rescue in order to improve service levels in this area and deliver budget savings required by central Government.

**John Horner**  
[johnhorner@warwickshire.gov.uk](mailto:johnhorner@warwickshire.gov.uk)  
Tel: 01926 842068



# Discovering the joy of keeping chickens

Nestled away behind the high hedges of the Norton Lindsey road at Bell Brook Farm on the outskirts of the village lies the new home of The Domestic Fowl Trust.

The Trust exists to encourage the keeping of poultry and help new owners discover the joys of having their own hens. It supplies a large range of poultry equipment, chicken houses, health products, bedding and hen food, as well as a range of different breeds of chickens.

Set up originally in 1976, Alister Jones and Becky Smith, both experienced farmers and poultry producers, took The Trust over late last year, adding it to

**'The only pet with a tangible return - all those lovely eggs!'**

their existing poultry breeding business at Bell Brook Farm. It officially reopened at Easter this year.

And now it's a flourishing enterprise, providing employment for three part-time workers, as well as Alister and Becky, and a flock of volunteers.

The Trust, which is open to the public

every day except Sunday and Monday (check the website for times), also fulfils an educational purpose, providing work experience opportunities for local students, particularly those with an interest in veterinary work, and hosts visits from the local nursery and junior schools every summer.

At its busiest it can have up to 500 birds on site, including pure and rare breeds and hybrids – the most prolific layers, most docile and easiest to look after and therefore ideal for back gardens. Individual 'point of lay' birds cost anywhere between £15 and £35.

Interest in keeping chickens is growing, with an estimated half a million back garden keepers. As long as you have fewer than 60 birds you don't need to register with Defra – the Department for Environment, Food and Rural Affairs.

'Keeping chickens is a joy,' Alister says. 'But as well as being a joy it's the only pet with a tangible return – all those lovely eggs! The Trust, through its



*Alister and feathered friend*

stockroom, can provide whatever you need for your flock, and offers free delivery in the village.

'At The Domestic Fowl Trust we can supply the whole package for anyone who's planning on keeping chickens in their garden – help and advice, houses and equipment, bedding and food and, most importantly, a wide range of hens especially suitable for the back garden poultry keeper.'

Find out more at [www.domesticfowltrust.co.uk](http://www.domesticfowltrust.co.uk)



## Curries and community grants action climate change

This year SACC received an exciting array of grant applications to support carbon-reducing initiatives in the parish. Each year, the money generated by the electric solar panels on the sports club and village hall is distributed at the SACC AGM in October. Over £5,000 was distributed this year to the various carbon reduction causes. The following community grants were awarded (full details at [www.snitterfieldacc.org](http://www.snitterfieldacc.org)):

- Bell Brook Farm (£1,500) - contribution towards a photovoltaic solar array.
- Snitterfield Stores (£300) - match funding for new LED lighting.
- Village Hall (£1,000) - contribution to a proposed front porch.
- Parish Council (£300) - contribution to a road safety survey 'Safe Routes to School'.
- Snitterfield School (£500) - contribution towards its Forest School Extension.
- Sports Club (£809.32) - match funding of various detailed carbon reduction initiatives.
- St James the Great Church (£700) - a further contribution towards its LED lighting upgrade.

Can you think of ways you could reduce the carbon footprint of Snitterfield? It's easy to apply for a grant via the SACC website.

The village hall was packed when Snitterfield Actioning Climate Change laid on a curry night combined with a screening of Naomi Klein's dramatic new film, *This Changes Everything*. The

film was compelling. It demonstrated how, around the world, communities are rising up against the destruction of their environment from the mining and extraction of fossil fuels.

The film was screened ahead of the Climate Change rally in London on 29 November, for which there was sufficient demand that a coach was organised to leave from the village. The rally is ahead of the latest scheduled climate talks in Paris in December, where world leaders and representatives from over 190 countries will be meeting for the United Nations 21st Conference of the Parties (COP21).

The aim is to agree a global legally binding climate treaty to limit temperature rise to less than two degrees centigrade. This year is almost certain to take the world past one degree centigrade warming above pre-industrial levels, surpassing 2014 as the hottest year on record.

**Duncan Parker**



*SACC's curry night in the village hall*

# The master builder of our school

James Trubshaw left school at 11 to work in his father's building and stonemasonry business and had little formal education after that. Nevertheless, a combination of ingenuity and great practical skill gained him a considerable reputation.

He worked on the building of Buckingham Palace, in Windsor Castle and pioneered an under-excavation process to straighten a church tower in Cheshire that was copied 150 years later to arrest the increasing lean on the Tower of Pisa. In building the Grosvenor Bridge over the Dee at Chester, Trubshaw constructed a single stone span of 200 feet, then reputedly the longest in the world, despite the great engineer Thomas Telford having described it as impracticable.



James Trubshaw

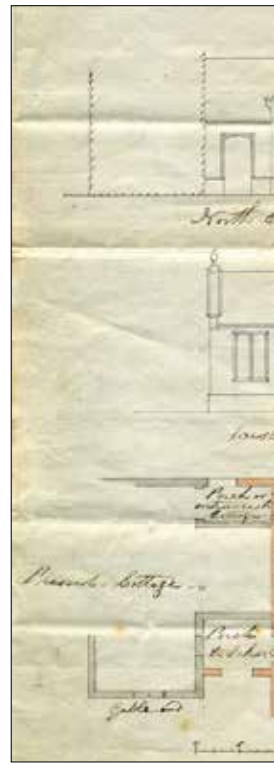
It was a project which took him from 1827 to 1833 to complete.

So how was it that such a notable personage should be engaged in a small school-building scheme in Snitterfield? The answer appears to lie in the building connections of the Philips family, who had bought

the estate of Snitterfield in 1815. In 1831, shortly before he was elected to parliament, Mark Philips would certainly have known of Trubshaw. During this period Trubshaw was involved in various substantial projects in Warwickshire, including preparations for his construction of a horse-drawn tramway to Shipston-on-Stour, which he finished in 1836. This was a branch from the tramway completed in 1826, linking the canal basin at Stratford-on-Avon with Moreton-in-Marsh.

Trubshaw was also involved in the rebuilding of Weston House, in the parish of Long Compton (demolished in 1934). Just a few miles separated Weston and Snitterfield and it is easy to imagine the conversation: 'Oh, and when you come down to Weston, could you ...?'

Mark Philips was mainly based at the family estate in Manchester at this time but moved to Snitterfield upon his retirement from parliament in 1847, living in Park House before building Welcombe Lodge (now Welcombe Hotel). See *Snipe* issue 9, *Snipe* issue 39. Acknowledgement: [www.littlebeams.co.uk](http://www.littlebeams.co.uk): A Little History of Snitterfield section.



## It's curtains for the Village Hall

If you go down to the hall today, you're sure of a big surprise. Thanks to the very kind and generous donation by Anna and Peter Turner, the village hall now has a set of splendid new stage curtains which look fabulous and really make a big difference to the hall. Thank you very much indeed Anna and Peter.

As you may recall from the last edition of *Snipe*, the Parish Council and Village Hall Management Committee are keen to bring the village hall up to date and are suggesting that a new toilet block be built on the site of the existing store. The existing toilets could then be refurbished as a chair store. The room at the back would be demolished and replaced with a bigger room with glass doors overlooking the grassy area at the rear.

The plans for the hall were on display at our open day on 19 September and you can also see them here and on the village website. Thanks must be paid to Snitterfield's David Robotham for his help and expertise with the plans and the project to date.

Those who came to the open day filled in a comments form on the proposals and there was overwhelming support for the scheme. If you have any comments to make on the plans please send them to the email addresses below or call Eric Noble 01789 731732.

Our next steps will be to finalise the plans and apply for funding. The management committee are keen to start the work as soon as we are able to next year. As part of our fundraising we will be holding a Variety Show in the village hall (see advert right). If you would like to take part in the concert or would like to join us on the night please contact Liz Johnston & Eric Noble 01789 731732, email: [emmjohnston@hotmail.com](mailto:emmjohnston@hotmail.com) or Hilary Schmidt-Hansen 01789 731246, email: [Hilary@thegables.spacomputers.com](mailto:Hilary@thegables.spacomputers.com).

To hire the hall for functions please see the advertisement on the back page.

Hilary Schmidt-Hansen



## CHRISTMAS CONCERT

Saturday 12th December

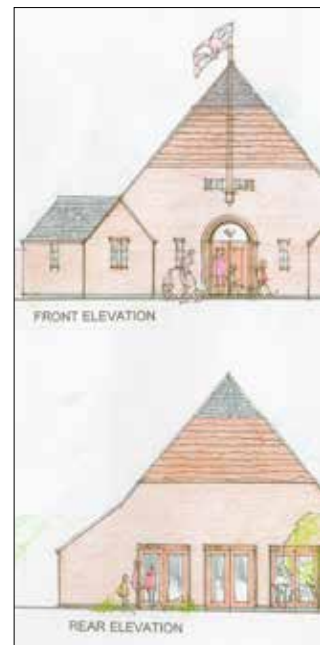
Snitterfield Village Hall  
7.30pm (doors open 7pm)

Presenting an evening with  
local talent, good humour,  
singing, musicians,  
raconteurs and choir

Adults £5 Children £2.50

Information and tickets  
Liz & Eric: 01789 731732  
Hilary: 01789 731246

In aid of the Village Hall Fund







Haywood Sepr. 19th 1831

Dear Sir

With this you have a sketch of a School which I hope will meet your approbation - You will perceive I have brought it out about 2 feet before the gable end of the Cottage towards the road as we proposed when you was there and have taken the end of the Cottage for the School - The dotted red line shews the site of the present building proposed to be taken & which I hope you have arranged with the Clergyman & the Parishioners for[?] — Should the Schoolmaster have the Cottage there may be an access either out of the Porch of the House or School —

I am going to Weston on Wednesday and & shall afterwards be in the neighbourhood of Shipston on Stour surveying a line of Country for a branch from the Stratford and Moreton railway to Shipston which will occupy my time several days — Should you have made arrangements for the school & wish it to be begun I will go over to Snitterfield and set it out before I leave the neighbourhood —

I am sorry this sketch has not been sent sooner but the whole of my time has been taken up at Chester for the last month on account of my Son's indisposition who I am sorry to say continues very unwell

I am Dear Sir  
Your Obedient Servant  
J. T[?]. Trubshaw

P.S. A letter will find me at the George Inn at Shipston on Stour till Monday or Tuesday next week —

**Left: Trubshaw's sketch of Snitterfield School dated 1831**  
**Above left: The transcript of his letter: [?] denotes doubt over the meaning of the original**  
**Above right: Trubshaw's letter to Mark Philips**  
**Below: The cover of the letter**

Before the revolution of the Penny Post in 1840, with its system of charging by weight, letter postage was prohibitively expensive for most. This was partly due to the fact that it was a convenient source of revenue for the government, like fuel tax today. The cost of sending a letter was generally calculated according to the number of sheets of paper used and the distance travelled to the addressee. According to published tables, the single folded sheet used for Trubshaw's letter would have cost 7d (about 3p) to send the fifty miles from his home to The Park.



It was normal for the charge to be scrawled on the cover, and in this case, it does appear to be a figure 7. In terms of average wage rates of the time, this was at least 50 times what it costs today. Not that this was often a worry for the sender, at least an inconsiderate one, as prepayment was not the norm - it was usually the recipient who bore the cost.

Since an envelope had to be made manually by folding a sheet of paper, thus doubling the cost of a single-sheet letter, it is hardly surprising that envelopes were rare. Instead, part of the sheet used was left blank and folded to the outside for the address to be written on and a seal to be applied. The note concerning the sender, contents and date of the letter is very possibly in Mark Philips' hand.

## News from the Primary School

*Continued from page 1*  
 Most classes at the Primary School have based their learning around history themes this term - from recent history (the 1950s) to the Ancient Egyptians and the Mayans. We've seen a lot of good writing coming out of these themes and the children are really enjoying their learning about these different periods of history.

Class 2 (Years 1 and 2) had a super day in November when they had a 1950s school day. They came dressed up in 50s style clothing and even made that old fashioned pudding - jam roly poly! Before that several grandparents had been into class to share their childhood memories of the 1950s.

The children really enjoyed having their grandparents in and listening to their stories. They gained a huge amount of knowledge and had a lovely memorable experience.

A very well-attended Harvest Festival was held just before the half-term break in October, with some lovely readings and poems by the children and some appropriately autumnal songs. An amazing number of tins, jars and packets of food were kindly donated for the Stratford Food Bank. Many thanks to all who attended and gave so generously.

Is your child due to start school in September 2016? If your child was born between 1 September 2011 and 31 August 2012 then you should apply for them to start school in September 2016. Parents are encouraged to apply online at: [www.warwickshire.gov.uk/applyforschool](http://www.warwickshire.gov.uk/applyforschool) Applications must be made by Friday 15 January 2016.

We would love to invite prospective parents to visit us so that we can show you our lovely school in action. Please contact the school to make an appointment, either by telephoning 01789 731301 or by email at [admin2046@wellearn365.com](mailto:admin2046@wellearn365.com)

**Sarah Plaskitt**  
**Executive Headteacher**  
**Stratford Rural Schools Federation**



# An extremely prickly subject

Do you have hedgehogs in your garden? We had one walking around in the afternoon sun one day in August. A hedgehog spotted before sunset is most likely injured or sick.

Hedgehogs as a species have changed little over the last 15 million years but now they are threatened. One study lists them as one of the ten most likely species to become extinct in Britain by 2050. In 1950 there were 36 million hedgehogs in Britain and today there are less than one million.

Warwickshire Wildlife Trust is leading the conservation work with its 'Help for Hedgehogs' campaign ([www.helpforhedgehogs.co.uk](http://www.helpforhedgehogs.co.uk)) with funding from the British Hedgehog Preservation Society ([www.britishhedgehogs.org.uk](http://www.britishhedgehogs.org.uk)).

To attract Britain's most loved species to your garden, according to the BBC Wildlife survey, you should provide

access and a suitable habitat. Make holes in your fence and ask your neighbours to do the same (see [www.hedgehogstreet.org](http://www.hedgehogstreet.org)). Hedgehogs like thick dense undergrowth and a variety of lengths of grass.



*Linda Clements has rescued hedgehogs for more than 20 years*

When we found the hedgehog in daylight we contacted Linda Clements and took the hedgehog to her rescue centre in Claverdon. She nursed the hedgehog back from a lung infection and we released it back into our garden a month later. We promised to keep feeding it until the winter. To protect the food from other animals and rain, we put the cat food in a tunnel made out of six bricks and a box lid.

Hedgehogs hibernate from mid-November until mid-March. So, if you find a hedgehog moving around during winter you should intervene. Check the websites mentioned for advice. I hope you help hedgehogs in your garden: in return, you get help with controlling slugs and insect pests.



*Hedgehog released by Claes after its treatment by Linda*

## Ways that you can help hedgehogs

- Feeding them with cat or dog food (never milk or bread!), especially during the autumn.
- Not using any pesticides in your garden. Slug pellets are particularly bad.
- Using non-toxic paint in the garden. Hedgehogs often lick new smells and surfaces.
- Being very careful when you use a strimmer or mower. Check for hedgehogs resting under bushes, in compost heaps or piles of leaves or grass. Several hedgehogs at the rescue centre have been injured by strimmers.
- Checking the bonfire for hedgehogs before you light it.
- Controlling what your dog is doing when in the garden late at night. Dogs can injure hedgehogs.
- Preventing hedgehogs from falling down holes, into water troughs, ponds or swimming pools. If you cannot prevent them from falling in, then make sure there is always a way for them to get out.
- Providing a hedgehog home. You can buy these or build one yourself. Preferably without a floor.

*Warwickshire Hedgehog Rescue (Claverdon): 01926 843043, [www.warwickshirehedgehogrescue.org](http://www.warwickshirehedgehogrescue.org). Other good hedgehog websites: [www.sttiggywinkles.org.uk](http://www.sttiggywinkles.org.uk) and [www.bighedgehogmap.org](http://www.bighedgehogmap.org) (where you can report sightings).*

**Claes Martenson**  
[martenson.claes@gmail.com](mailto:martenson.claes@gmail.com)

## Snitterfield Volunteers

The Snitterfield volunteers were out in force at the fireworks display at the sports club. An email was circulated to the folk on the volunteers list, and several villagers were able to offer their assistance with the event. Thank you to all those people that offered help. It was very much appreciated.

By adding your name to the volunteers list you will be emailed a couple of times a year, when help is required at events in the village. This can be anything from car park marshalling to manning a stall at the village fete for an hour or two. There is no obligation to help so please don't be put off! If you would like to join the growing group of village volunteers please email Vikki Parker at [www.snitterfieldvolunteers@gmail.com](mailto:www.snitterfieldvolunteers@gmail.com)

**Vikki Parker**

## EYE SPY



How well do you know your village? This gate is visible from the road for those with keen eyes.

Take a winter walk and see if you can spot it.

No prizes – it's just for fun.

Answer page 8.





**Fruit and flower,  
plant and bush  
For morning robin,  
evening thrush  
For all your gifts of  
every kind  
We offer praise with  
quiet mind.**

As rays of sunshine glisten on the last golden leaves of the sycamore trees and bats flicker in the darkening skies is it time to put the garden to bed? ... not likely! Grab the chance to plan, plot and plant so you can enjoy your winter garden and every day of next year.

Make sure you can see blooms from your window by planting some interesting feature specimens to entice you out. I especially love my garden in winter as there is so much to



see. Trees have a different allure with unexpected textured and coloured bark; scent wafts from late flowering shrubs and there is a special quality of light that highlights seed heads and frosted stalks.

So invest in some time to think how your garden can perform for you. Perhaps you may wish to redesign your plot. Before the hard weather sets in shrubs or perennials can easily be repositioned by digging out the plant with a good root ball and

watering it in well in its new space. Avoid planting when the ground is waterlogged or frozen.

Add structure: maybe a large pot, a bird bath or a small tree. *Sorbus hupehensis* has attractive foliage and beautiful berries in autumn and winter. Other possibilities are *Cornus 'Eddie's White Wonder'*, which has exotic flowers (actually bracts) in spring and brilliant colour in autumn, or a small silver birch (*Moonbeam*) with a stunning white trunk and lacy leaves. Winter shrubs such as *hamamelis* (Witch Hazel), *Viburnum bodnantense* and *daphne* all have amazing perfume. Cloud prune shrubs to give a new look, creating space around them

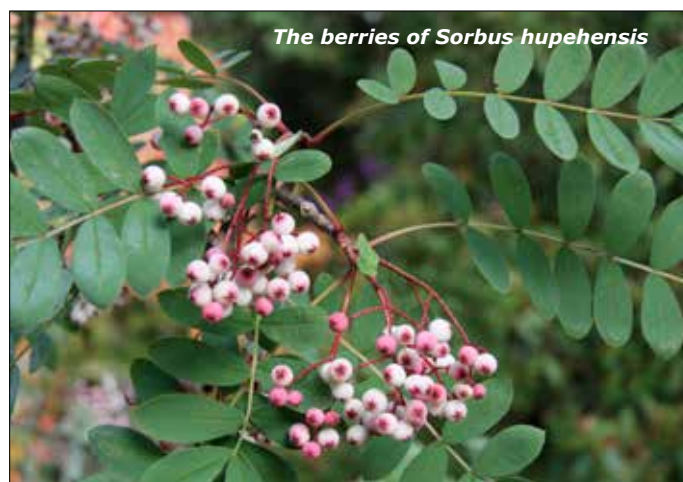
or transforming an overgrown shrub into a living sculpture. Most effective are box, yew, osmanthus and azalea.

Do improve the soil in the borders with a good mulch of compost. I use a mix of our own garden compost, leaf mould and 'Super Dug', a concentrated organic chicken manure which has been particularly effective on our clay soil. Why not plant spring bulbs near to the house, preferably in the lawn so they can naturalise. For early summer interest *Allium 'Purple Sensation'* or 'Mount Everest' are really effective planted in groups in borders.

Tubs and containers filled with tulips or a small shrub for winter interest can be replanted in summer. I plant large pots with a variety of hellebore, which has masses of white blooms, surrounded by trailing periwinkle. These are dug out in late spring to be replaced by a summer planting of pelargoniums.

Winter jasmine near to the house is bright and cheerful while a clump of *Iris unguicularis (stylosa)*, shooting up exquisite blooms outside the drawing room window, are just a joy. As the first spring bulb shoots emerge from the soil like swords the battle of winter has been won: there is a feeling of hope. Before you know, it will be summer ... more planning but so much pleasure.

**Margaret Tweed**  
[www.snitterfieldgardenclub.org.uk](http://www.snitterfieldgardenclub.org.uk)



*The berries of Sorbus hupehensis*

## Property Security Marking Day

The local police Safer Neighbourhoods Team will be in Snitterfield on Friday 8 January, visiting residents in their homes to security mark property. Various types of marking will be available:

- Visible – ideal for power tools, gardening equipment, bicycles and other items kept in your shed or garage.
- Invisible ultraviolet marking and other products ideal for valuable items in your home.

To take advantage of this free event promoted by Stratford District Council Rural Crime Team:

- Book an appointment time for between 8am and 8pm, on the booking form available at the Village Stores.
- Have up to ten items ready for marking on the day, which will take up to about 30 minutes.

To further encourage security marking of your property with postcode and unique address identity, the Parish Council has available for loan a property marking kit containing:

- 'Cremark' oil-based paint marker – an effective visible theft deterrent for use on power tools, gardening equipment and similar items typically in your shed or garage.
- Ultraviolet marker pen to invisibly mark items – yours to keep.

To borrow the property marking kit or if you have any questions, contact Denis Tweed, 01789 731636, email: [denis.tweed@btinternet.com](mailto:denis.tweed@btinternet.com)

## DIY SOS - Snitterfield Style

The village's Nursery School has a problem. Whilst the nursery is going from strength to strength and numbers are increasing year on year, our building is long past its best.

We are hoping to pull together a group of people who can take the lead on helping us get a new one. We are convinced that in this village there are a brilliant group of people who know about planning, design, grant applications, modular buildings, fund raising, who can throw a good party, deliver leaflets, make links with other committees – and we need it all! We are looking to pull together a team who can take the lead on helping us get our new building and we also need a chair person to pull it all together. Think DIY SOS, Snitterfield style.

So, could this be you or someone you know? Do you have some skills that we need? Some time that you would be willing to commit and a desire to support this hub of our community, the village's only social enterprise? You don't need to have had anything to do with the nursery before and will be well supported by the directors. If you would like to find out more, please contact me directly, or call in at the nursery to have a look and leave your details. Thank you for any offers of your time and help.

**Helen Highlands, chair of the board of directors**  
[helenhighlands@btinternet.com](mailto:helenhighlands@btinternet.com)  
**01789 730608**

# What's On

## Snitterfield Garden Club

**5 January:** 'Unusual Vegetables in the Flower Bed' by Graham Wagstaffe and his wife. **2 February:** 'Plant Classification for Gardeners' by Timothy Walker.

**1 March:** 'Charles Maries, Plant Hunter' by Caradoc Doy (Charles Maries was born in Hampton Lucy. His story is intriguing).

**5 April:** 'Exotic Planting in the Garden' by Tim Miles from Cotswold Wildlife Park.

## Parish Council Meetings

On the second Monday in the month, unless changed by the council. See noticeboard on Smith's Lane.

## Snitterfield Actioning Climate Change

SACC meetings first Thursday each month in Village Hall, 8pm.

Check [www.snitterfieldacc.org](http://www.snitterfieldacc.org) for changes.

## Snitterfield WI

Meetings on the second Wednesday of the month at 7.30pm in the Village Hall.

## Sportsclub broadband

Free internet access is available at Snitterfield Sports Club (50p fee for temporary guest status for non members). Opening times for weekdays are 7pm to 11pm; Saturdays 12 noon to 11pm; Sundays 12.00 noon to 10.30pm.

## Meditation and Relaxation Classes for Women who Lead Busy Lives

Classes on alternate Wednesdays, Village Hall, 7.30pm to 8.30pm Contact Sue 07581183458.

## Classical Ballet Classes for Adults

Thursdays (term time) Beginners: 9.20am, Intermediates: 10.05am in the Village Hall. Contact Rosie Parker, R.A.D, R.T.S. Email: [rosieparker@outlook.com](mailto:rosieparker@outlook.com)

## Friends of Snitterfield School

**Dads & Lads' Games Night** at the Snitterfield Sports Club. Friday, 29 January 2016 7:30pm onwards. Tickets £10 to include hot snacks

**Ladies' Supper Club** at Snitterfield School Friday 11 March 2016 7:30pm onwards. Tickets £15 for a three course menu, BYOB!

## Fireworks go off with a bang

The Village Bonfire, held on Saturday 7 November, was the most successful yet. We had a record turnout of more than 800 people. This was 25 per cent up on the previous year. The entrance money covered the cost of the fireworks, which as everyone who attended will testify were fantastic, and for improvements to the Sports Club facilities. There is a lot of work that goes into making this event successful. A big thank you to everybody who helped us. It is much appreciated.

Pat Elliott  
Snitterfield Sports Club

## Rag-Tag Toddler Group

Monday morning in the Village Hall 10.00-11.45am during term time. Open to parents and carers with children 0-4 years. Wide range of toys and a friendly welcome. Do come along and meet us or contact Hilary Schmidt-Hansen. Tel: 731246

## CHRISTMAS FAIRE



at St. James Church, Snitterfield



Saturday, December 5th, 2015 from 2 til 4pm

Come in for teas, coffee, cakes and mince pies in our beautiful village church then stay to browse books, gifts and cards.

Fun for the children with games, toy tombola, lucky dip and pick-a-cup, and visit our special guest, Father Christmas.

All proceeds to St. James Church & Friends of Snitterfield School

## Planning Matter

There is to be an Informal Hearing for a Planning Appeal for the application to build on land to the east of White Horse Hill (application reference 14/03086/OUT) to be held on 8 December 2015 at The Council Offices, Elizabeth House, Church Street, Stratford upon Avon. If you are intending to speak at the Hearing please bring four copies of you speech with you for distribution to the main parties.

Paul Blanchard

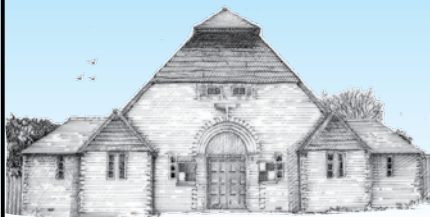
*Eye Spy: the pedestrian church gate to St James the Great on Church Road*

## Available for hire SNITTERFIELD Village Hall

Situated in the heart of the village, the hall is the ideal place to hold meetings, events, parties and family gatherings.

The facilities include: main hall, meeting room, kitchen, toilets, electric piano, stage and microphone.

For information, rates and booking please telephone 07501416221/ 01789 730514 email: [saust1@btinternet.com](mailto:saust1@btinternet.com)



As part of our Eco Schools programme and to raise funds, Snitterfield School now has a clothes recycling bin. It will take clean, wearable clothing and shoes (attached in pairs), handbags and belts, sheets, curtains and towels. Please place items in supermarket type bags with the handles tied in the bin at school. The school also has a scheme to recycle printer cartridges, DVDs and computer games in original boxes.

## Moving Pictures

### Cinema in the Village Hall

If you would like to join our email circulation list to suggest films you would like to see, please contact Hilary and Ole Schmidt-Hansen, Tel: 731246. email: [hilary@thegables.spaccomputers.com](mailto:hilary@thegables.spaccomputers.com)  
**Next screening:** 20 December - Inside Out (U) at 3pm & Man from U.N.C.L.E. (12A) at 8pm (later than usual due to carol service)  
17 January, 21 February, 13 March